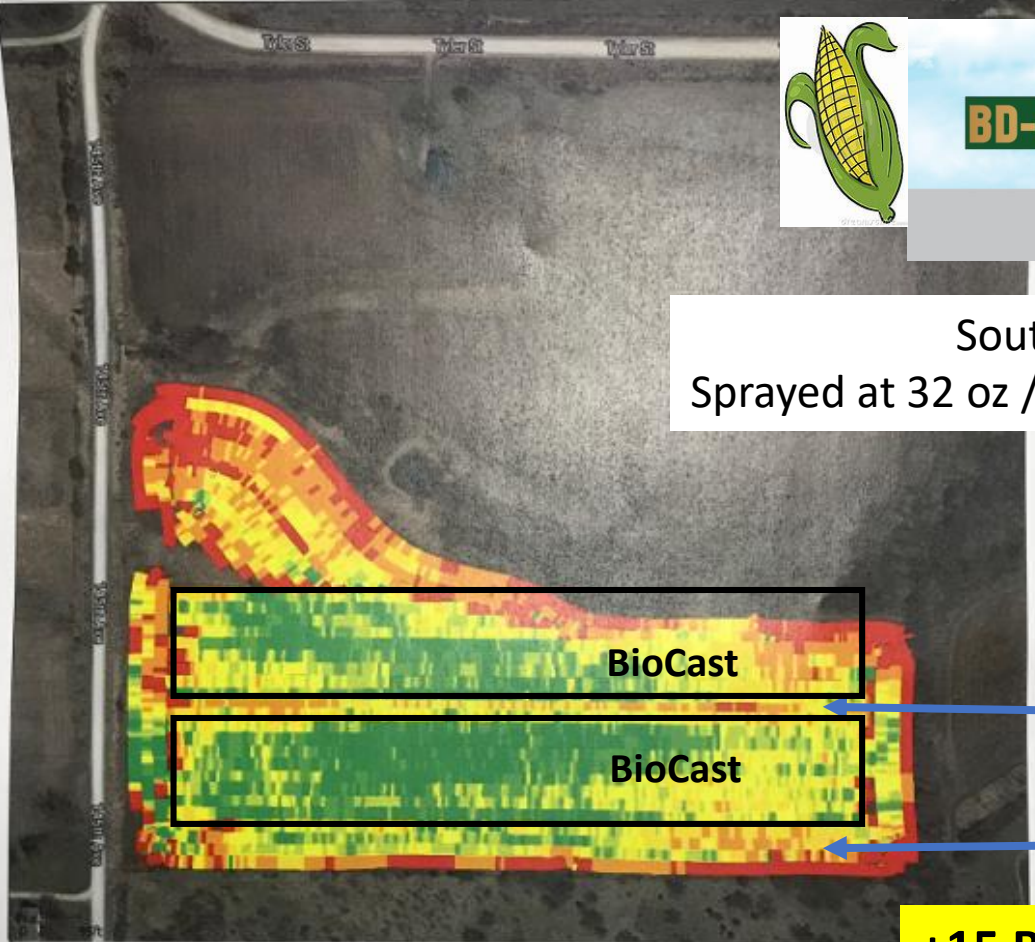




South Central Iowa 2018
 Sprayed at 32 oz / acre with post herbicide at V2-V3

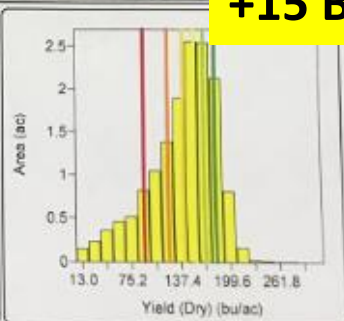


Check
 Check

+15 BPA w/BD-BioCast

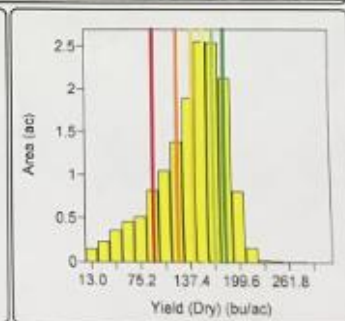
Grower :
 Farm : Tipton
 Field : South
 Year : 2018
 Operation : Grain Harvest
 Crop / Product : 1197R
 Op. Instance : Harvest - 1
 Area : 15.04 ac
 Avg. Yield : 140.94 bu/ac
 Avg. Moisture : 13.95 %

Yield (Dry) (bu/ac)	
183.16 - 1,785.72 (2.109 ac)	
168.98 - 183.16 (2.129 ac)	
156.87 - 168.98 (2.170 ac)	
142.39 - 156.87 (2.185 ac)	
122.74 - 142.39 (2.140 ac)	
92.03 - 122.74 (2.190 ac)	
5.26 - 92.03 (2.112 ac)	



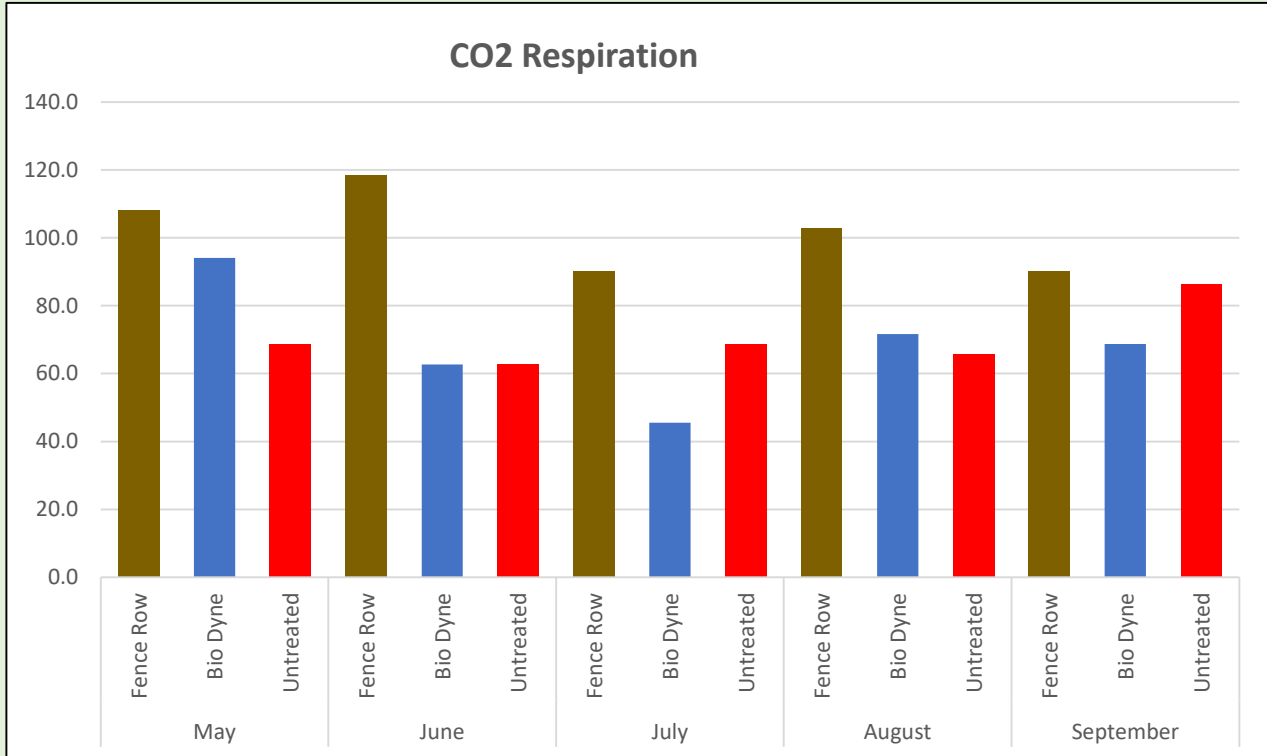
Farm : Tipton
 Field : South
 Year : 2018
 Operation : Grain Harvest
 Crop / Product : 1197R
 Op. Instance : Harvest - 1
 Area : 15.04 ac
 Avg. Yield : 140.94 bu/ac
 Avg. Moisture : 13.95 %

Yield (Dry) (bu/ac)	
183.16 - 1,785.72 (2.109 ac)	
168.98 - 183.16 (2.129 ac)	
156.87 - 168.98 (2.170 ac)	
142.39 - 156.87 (2.185 ac)	
122.74 - 142.39 (2.140 ac)	
92.03 - 122.74 (2.190 ac)	
5.26 - 92.03 (2.112 ac)	

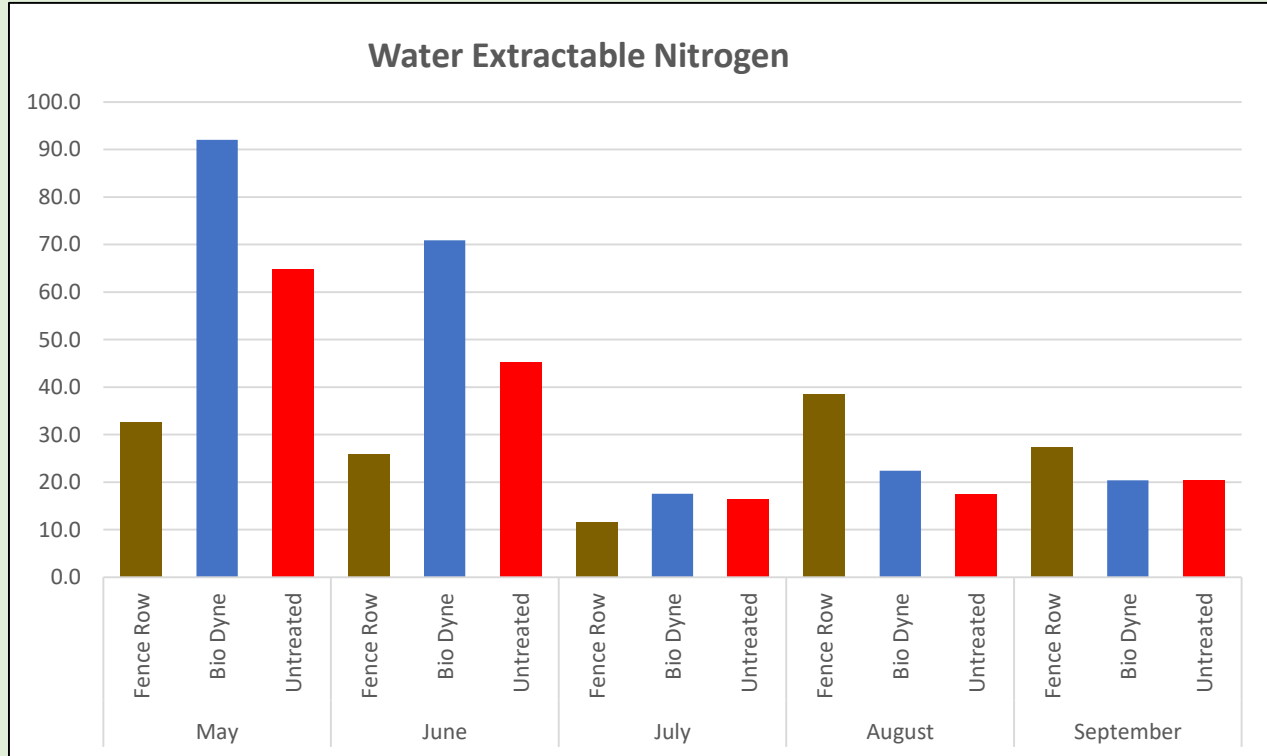


Haney Soil Sampling Data May - September

CO2 Respiration

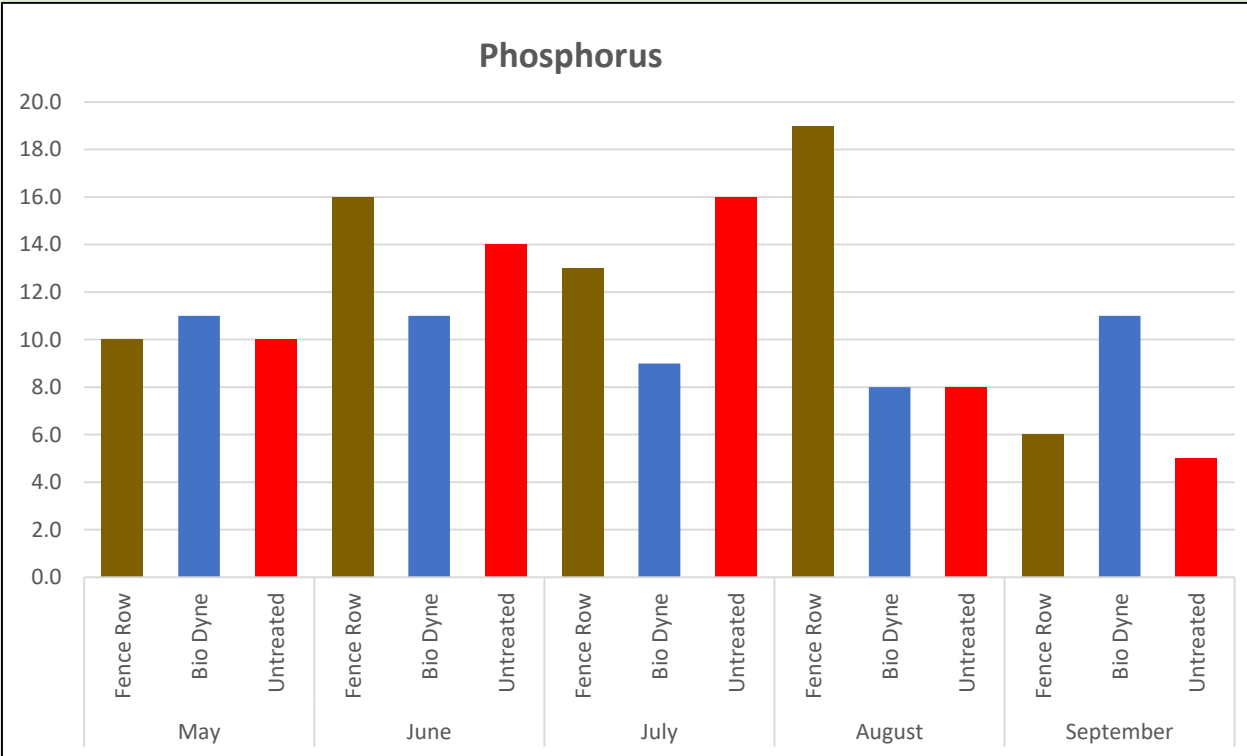


Water Extractable Nitrogen



Haney Soil Sampling Data May – September Cont...

Phosphorus



Potassium

